

R&D, Production, Sale and Service of IVD products

Precise
Smart
Practical

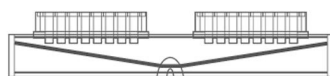


PW-960

Microplate Washer

HEALES 汇松

HEALES



Bottom holder is slope, in order that all waste water can be pumped out, which can prevent microplates from contaminating.

PW-960

Microplate Washer

Efficiency—2 Microplates alternative, washing 2 microplates within 1 minute.

Reliability—Special design of wash head and anti-clogging technology can avoid cross-contamination and blocking.

Regulatory compliance—Meet the IVD-directive 98/79/EC for Europe, CE marked.

Convenience—Easy to maintain and operate.



Uniform dispensing, low residual volume

Professional design of washer manifold's interior double tanks can keep water pressure uniform. Dispense precision $CV < 1.5\%$.
Aspirating in multi-position can guarantee low residual volume $< 0.7\mu\text{l}$.
Two alternative microplate holders make speed double, which can make use of soaking time.
Washer manifolds work continuously, save time.

Avoid cross-contamination

Long needle for aspirating and short needle for dispensing make waste water and solution minimally contacted.
Soaking and shaking can avoid fluid's adsorption.
Bottom holder is slope, in order that all waste water can flow along the surface and be pumped out, which can prevent microplates from contaminating.

Professional anti-clogging technology

The control technology of pump pressure can avoid needle's clogging.
Wash bottle filter can keep sediments in the solution away the pipes.
Pre-defined rinse procedure can avoid crystallizing in the pipes.
Detachable manifolds makes easy to clear particles in the manifolds.
Special cleaning fluid or pre-defined rinse procedure when turn on or turn off can make easy to maintain the device.

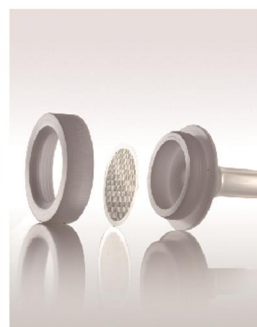
Suitable to different sample's quantity

Do not need to complement the whole plate or strip when any strip or hole is empty.
Do not need to stop working when change plates, which enhances productivity.
8-way or 12- way manifolds is available according to your conditions.

It is controlled by microcomputer to wash 48 well and 96 well microplate in experiments of Enzyme Linked Immunosorbent Assay (ELISA), Time-Resolved Immunofluorometric Assay (TRFIA) and Chemiluminescence, which are widely used in clinical diagnostic laboratories, centers for disease control and prevention, animal and plant quarantine, animal husbandry and veterinary epidemic prevention stations, biotechnological industries, food industries, environmental science, agricultural scientific research and other academic



Waste water sensor



Wash bottle filter



Water mist catching device

Easy to operate

Easy to name, edit and save different wash programs.

Motor speed is adjustable.

Stop or Pause key in the board can be chosen to stop or pause during working.

Multi-plate can be selected by default settings or manual operation.

Detachable microplate holder makes easy to disinfect and maintain it.

Air pressure can be adjusted to keep safe via special airpressure valve.

Operating noise can be less than 54 dB because of silencer design.

Advanced function, better expansibility

100 kinds of programs can be saved.

The positions of dispense and aspirate manifolds are adjustable.

Suitable for flat, U and V-bottom microplates.

Coating function, 1000 microplates/ hour.

PW-960

Microplate Washer



● Specifications

Wash head types: microplate 12 line×8 well and 8 line×12 well are available

Dispense uniformity: CV < 1.5%

Wash times: 1 to 99 times adjustable

Wash lines: whole plate or 1-12 lines random combination

Wash mode: Single plate, double plates or multi-plates

Dispensing volume: 50-950 μ l, interval 50 μ l adjustable

Wash speed: 5 seconds/plate, 140 plates /hour

Soaking time: 0 to 999 seconds adjustable

Shaking time: 0 to 999 seconds adjustable

Aspirating time: 0.1-99.9 seconds adjustable, interval 0.1second

Microplate positions: plate A and plate B

Residual volume: <0.7 μ l /well

Wash head positions adjustable: horizontal, left, right, middle, bottom, interval of plates

Bottle volume: 300ml and 4000 ml for solution bottle, 4000 ml for waste water bottle

Power: Power Supply 220V AC \pm 30%, 50Hz \pm 3 Hz

● Physical

External Dimensions 53.8cm (21.2 in) \times 42.6cm (16.8 in) \times 23.0cm (9.1 in)
(Height/width/depth)

Net Weight 21kg

● Note:

1. There are 3 kinds of devices: PW-960N, PW-960 and PW-960plus.
2. There is only one solution bottle for PW-960N.
3. PW-960 plus with added features:
 - a) Auto discharge function for waste water.
 - b) Water mist catching device keeps vacuum pump dry.
4. Solution bottle/waste water bottle: 300ml, 2000ml, 5000ml, 10L/ 20L(optional).

HEALES

Shenzhen Huisong Technology Development Co., Ltd.

Shenzhen Huisong Technology Development Co., Ltd.
3F, Building 114, Luohu 1st High-Technology Industrial Park,
Guowei Road, Luohu District, Shenzhen, CHINA
P.C.: 518004
Tel: +86 755 25821365
Fax: +86 755 25621819
E-mail: sales@heales.cn
Website: www.heales.cn

Patent No.: 200720118803.2 / 200720118804.7 / 200720118805.1
201120226820.4 / 201120227698.2 / 201120257341.9 / 201120257342.3

Local distributor info

